

**NOTICE**

THIS PRINT IS THE PROPERTY OF ZMI AND IS SUBJECT TO RECALL AT ANY TIME, AND IS NOT TO BE USED IN ANY WAY DETRIMENTAL TO THEIR INTEREST.

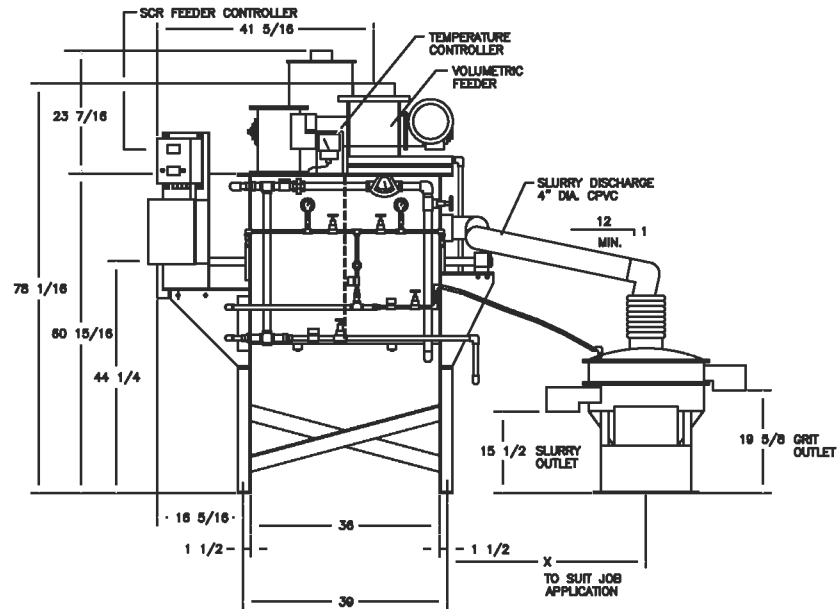
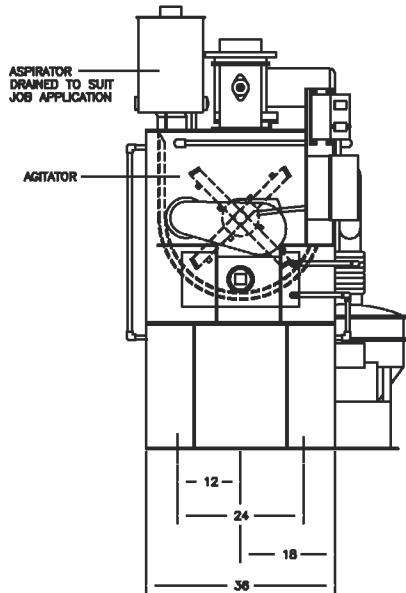
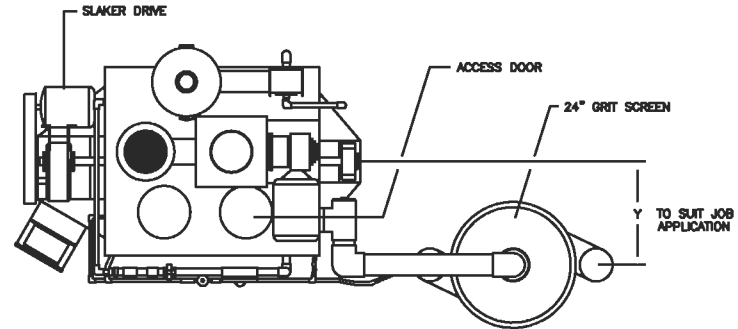
TOLERANCES - UNLESS NOTED

BETWEEN FINISH SURFACES:  
FRACTIONAL: + 1/64"  
DECIMAL: + .010"

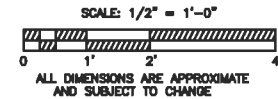
DETAIL DIMENSIONS: + 1/16"

ZMI/PORTEC CHEMICAL PROCESSING PRODUCTS  
P.O. BOX 874, SIBLEY IOWA 61849

DRUM SHELL 3/16"  
DRUM LINER 1/4"  
WATER JACKET 10 GA.  
END PLATES 1/4"  
BREAKER BARS 3/4" x 3/4"  
HARDENED STEEL  
293/391 BRINELL  
NET VOLUME 12 CU. FT.  
90 GALLONS  
CaO/HR. 1000 LBS.  
WATER 8 GFM  
INLET 1"  
DRIVE 1.5 HP  
NET SLAKER WEIGHT 2219 LBS.  
NET SCREEN WEIGHT 211 LBS.  
NET FEEDER WEIGHT 375 LBS.



M-5 SLAKER (LEFT HAND DRIVE)  
PORTEC DIMENSIONAL DRAWING



**NOTICE**

THIS PRINT IS THE PROPERTY OF ZMI AND IS SUBJECT TO RECALL AT ANY TIME, AND IS NOT TO BE USED IN ANY WAY DETRIMENTAL TO THEIR INTEREST.

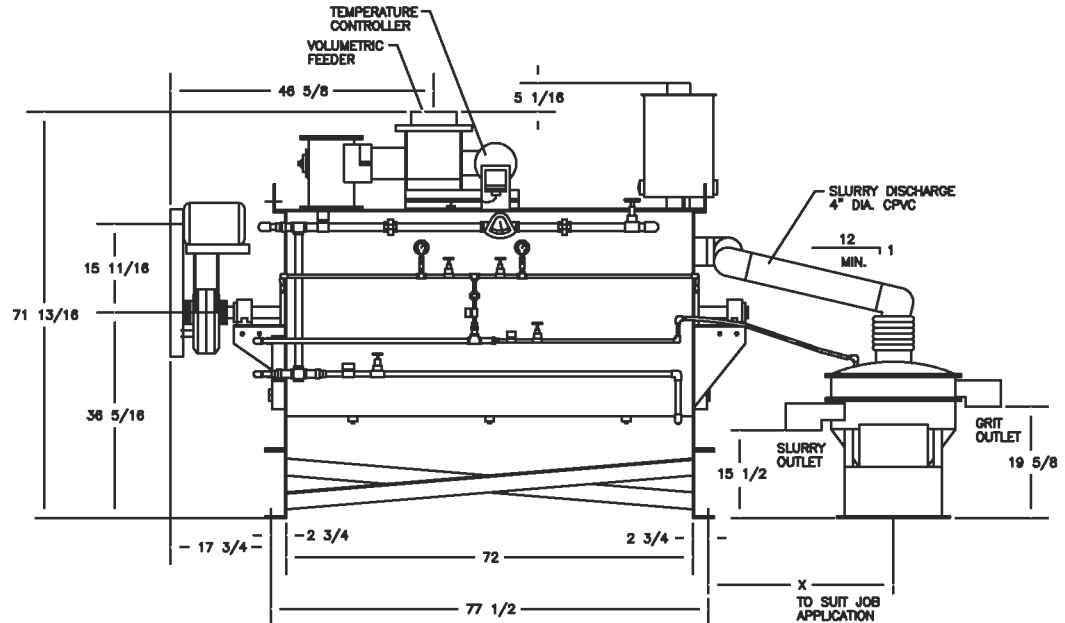
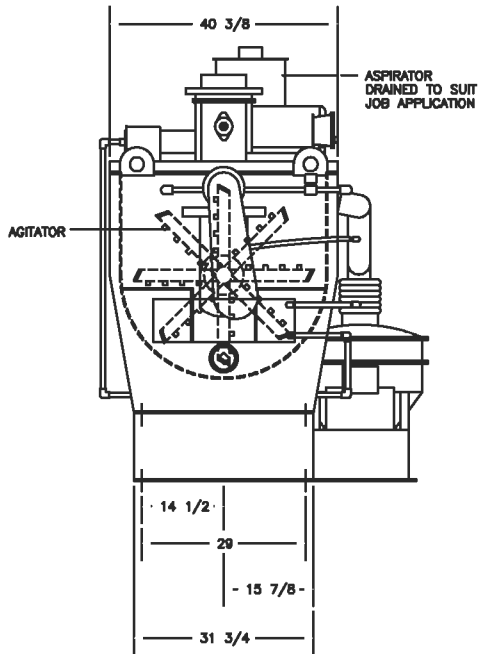
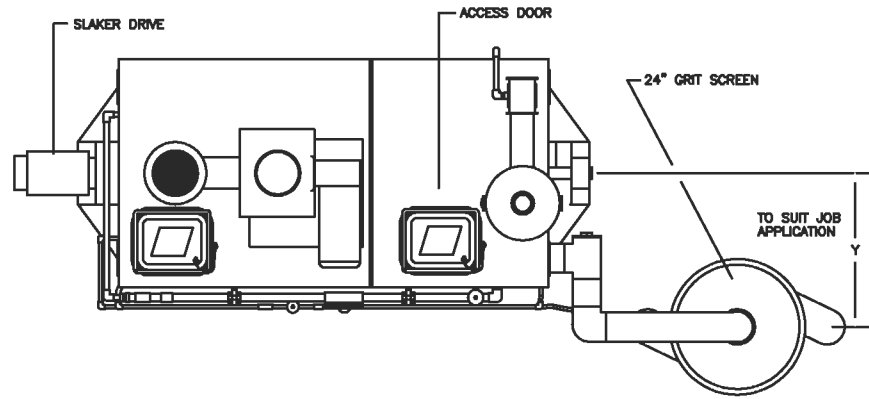
TOLERANCES - UNLESS NOTED

BETWEEN FINISH SURFACES:  
FRACTIONAL: + 1/64"  
DECIMAL: + .010"

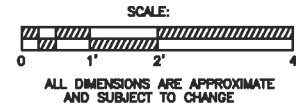
DETAIL DIMENSIONS: + 1/16"

DRUM SHELL 3/16"  
DRUM LINER 1/4"  
WATER JACKET 10 GA.  
END PLATES 1/4"  
BREAKER BARS 3/4" x 3/4"  
HARDENED STEEL  
293/391 BRINELL  
NET VOLUME 28 CU. FT.  
210 GALLONS  
CaO/HR. 2500 LBS.  
WATER 20 GPM  
INLET 1"  
DRIVE 2 HP  
NET SLAKER WEIGHT 3155 LBS.  
NET SCREEN WEIGHT 211 LBS.  
NET FEEDER WEIGHT 375 LBS.

ZMI/PORTEC CHEMICAL PROCESSING PRODUCTS  
P.O. BOX 274, SIBLEY IOWA 51249



M-15 SLAKER (LEFT HAND DRIVE)  
ZMI/PORTEC DIMENSIONAL DRAWING



**NOTICE**

THIS POINT IS THE PROPERTY OF ZMI AND IS SUBJECT TO CHANGE AT ANY TIME AND IS NOT TO BE USED BY ANY OTHER INDUSTRY TO THEIR ADVANTAGE.

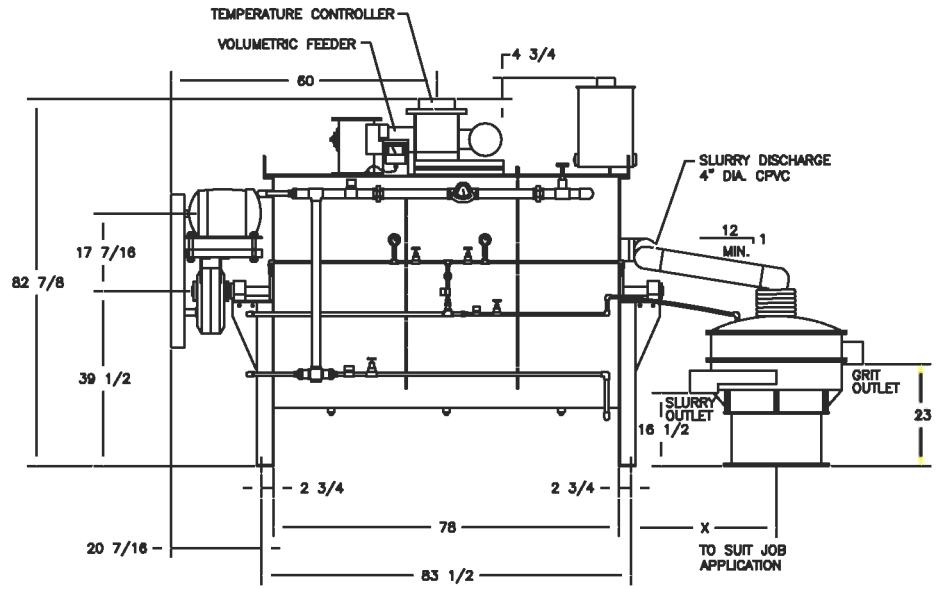
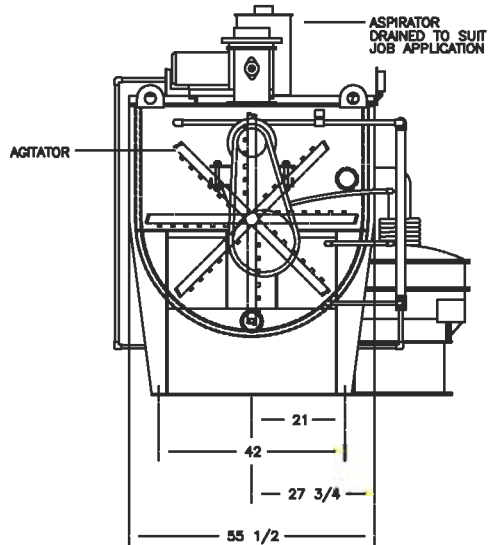
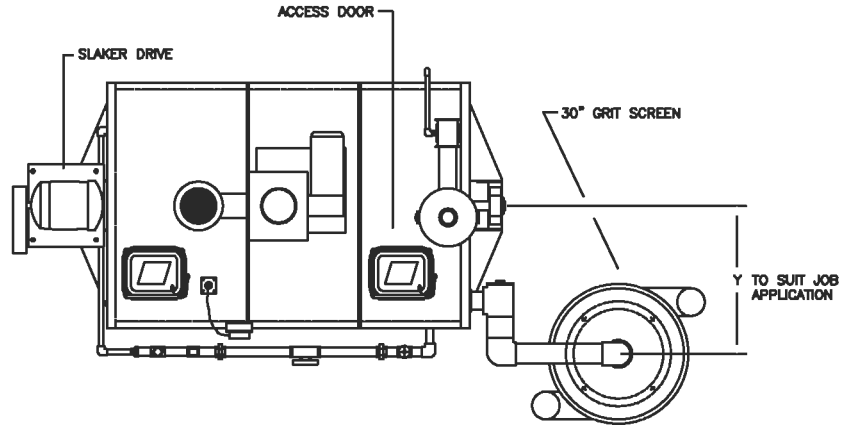
TOLEANCES - UNLESS NOTED

BETWEEN FINISH SURFACES:  
 FRACTIONAL: + 1/64"  
 DECIMAL: + .010"

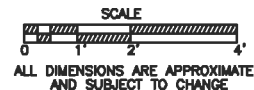
INTERNAL DIMENSIONS: + 1/16"

ZMI/PORTEC CHEMICAL PROCESSING PRODUCTS  
 P.O. BOX 874, HEDLEY FORD 61848

DRUM SHELL 3/16"  
 DRUM LINER 1/4"  
 WATER JACKET 10 GA.  
 END PLATES 1/4"  
 BREAKER BARS 3/4" x 3/4"  
 HARDENED STEEL  
 293/391 BRINELL  
 NET VOLUME 60 CU. FT.  
 450 GALLONS  
 CaO/HR. 5500 LBS.  
 WATER 43 GPM  
 INLET 1-1/2"  
 DRIVE 5 HP  
 NET SLAKER WEIGHT 4428 LBS.  
 NET SCREEN WEIGHT 339 LBS.  
 NET FEEDER WEIGHT 375 LBS.



M-25 SLAKER (LEFT HAND DRIVE)  
 ZMI/PORTEC DIMENSIONAL DRAWING



**NOTICE**

THIS DRAWING IS THE PROPERTY OF ZMI AND IS LOANED TO YOU BY AGREEMENT. IT IS TO BE RETURNED TO ZMI IMMEDIATELY UPON YOUR REQUEST.

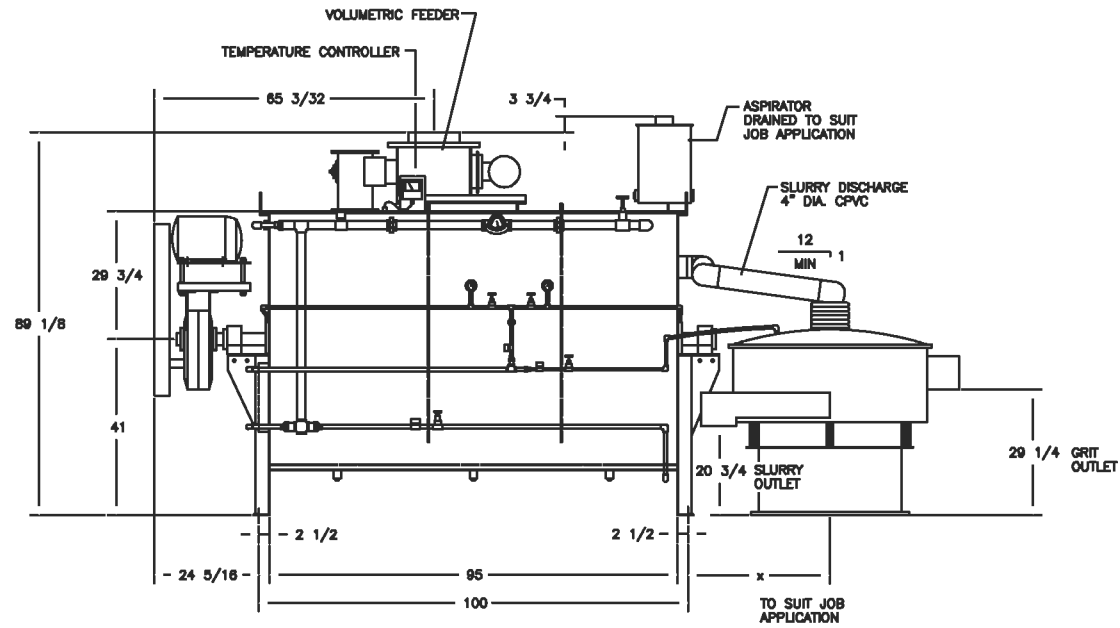
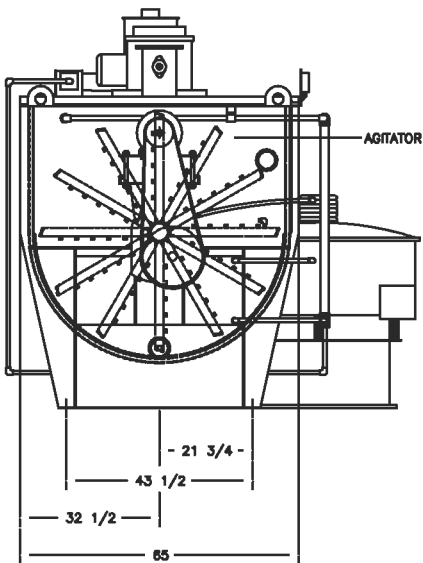
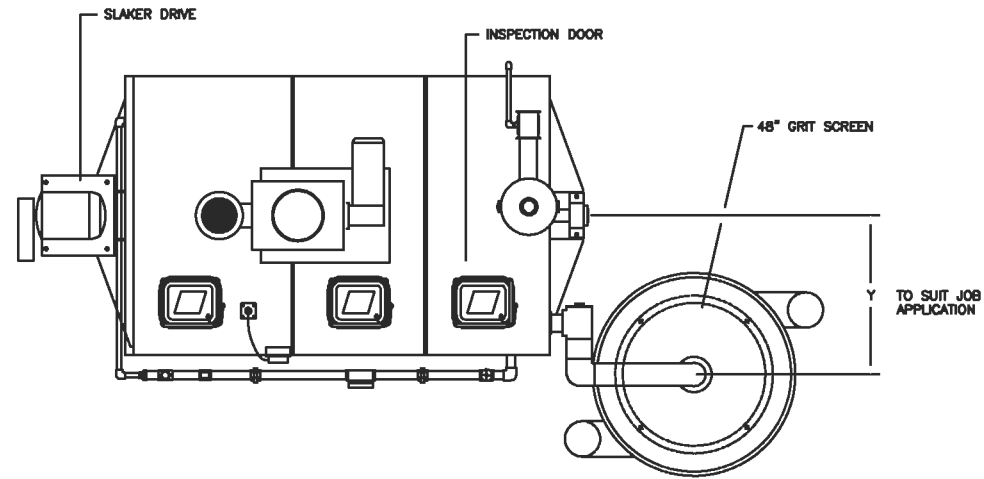
TOLERANCES - UNLESS NOTED

BETWEEN FINISH SURFACES:  
FRACTIONAL: + 1/64"  
DECIMAL: + .010"

INTERNAL DIMENSIONS: + 1/16"

ZMI/PORTEC CHEMICAL PROCESSING PRODUCTS  
P.O. BOX 274, SHELBY IOWA 51549

DRUM SHELL 3/16"  
DRUM LINER 1/4"  
WATER JACKET 10 GA.  
END PLATES 1/4"  
BREAKER BARS 3/4" x 3/4"  
HARDENED STEEL  
293/391 BRINELL  
NET VOLUME 96 CU. FT.  
720 GALLONS  
CaO/HR. 9000 LBS.  
WATER 72 GPM  
INLET 2"  
DRIVE 7 1/2 HP  
NET SLAKER WEIGHT 5443 LBS.  
NET SCREEN WEIGHT 211 LBS.  
NET FEEDER WEIGHT 375 LBS.

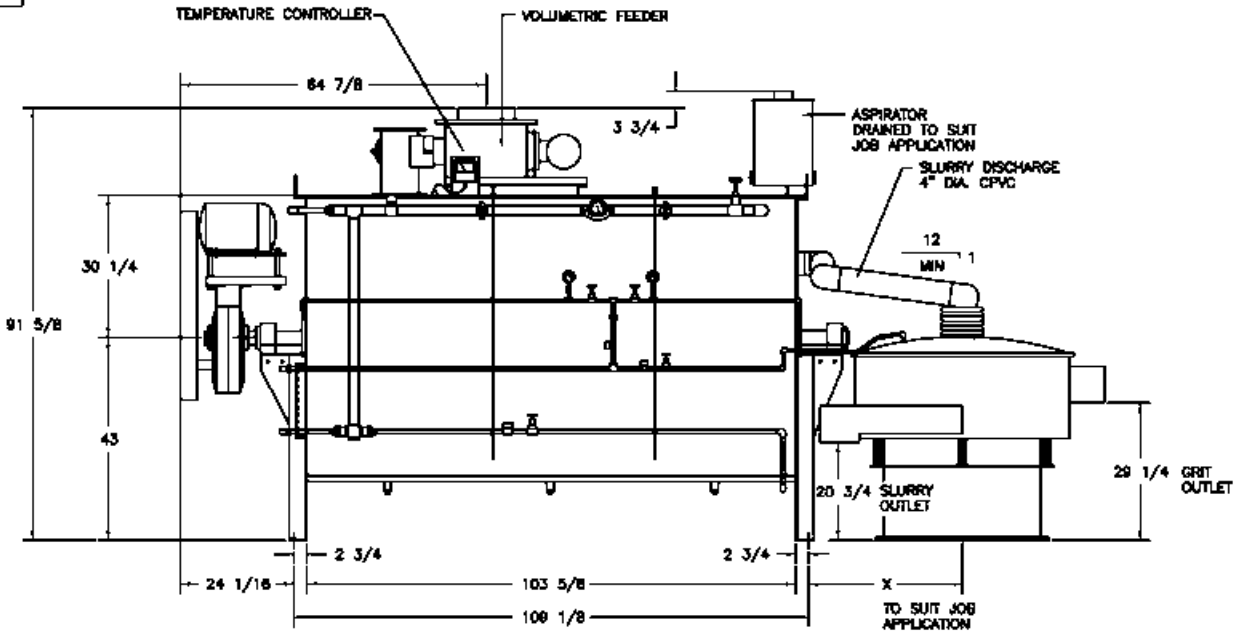
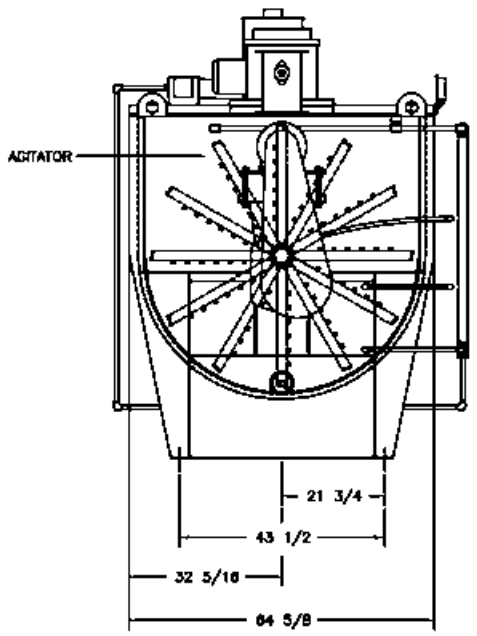
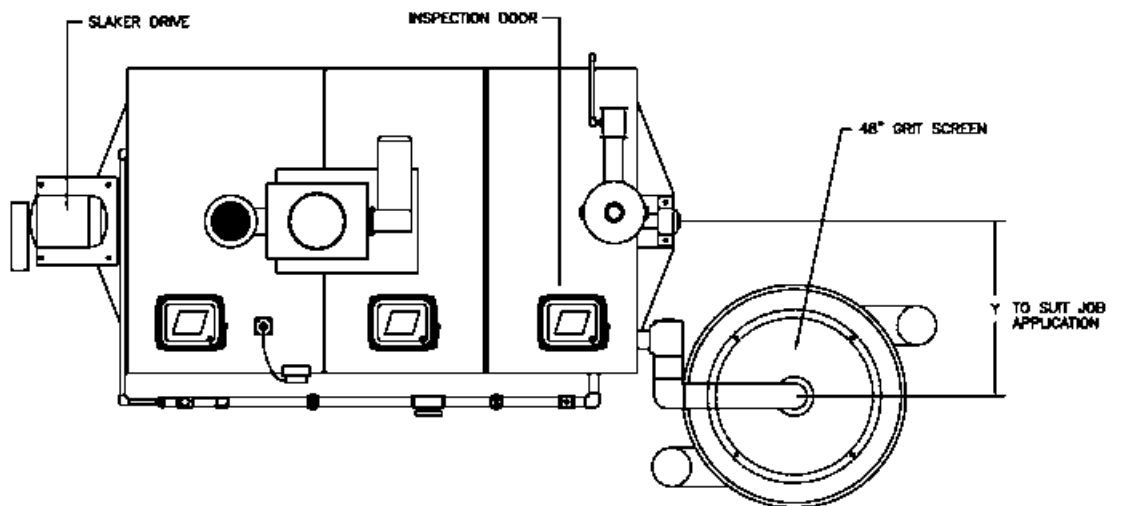


SCALE:  
0 1 2 4  
ALL DIMENSIONS ARE APPROXIMATE  
AND SUBJECT TO CHANGE

M-40 SLAKER (LEFT HAND DRIVE)  
ZMI/PORTEC DIMENSIONAL DRAWING

**ZMI/ PORTEC CHEMICAL PROCESSING PRODUCTS**  
 P.O. BOX 274, SIBLEY IOWA 51249

DRUM SHELL 3/16"  
 DRUM LINER 1/4"  
 WATER JACKET 10 GA.  
 END PLATES 5/16"  
 BREAKER BARS 3/4" x 3/4"  
 HARDENED STEEL  
 293/391 BRINELL  
 NET VOLUME 132 CU. FT.  
 890 GALLONS  
 CaO/HR. 12,500 LBS.  
 WATER 100 GPM  
 INLET 2"  
 DRIVE 16 HP  
 NET SLAKER WEIGHT 5984 LBS.  
 NET SCREEN WEIGHT 659 LBS.  
 NET FEEDER WEIGHT 375 LBS.



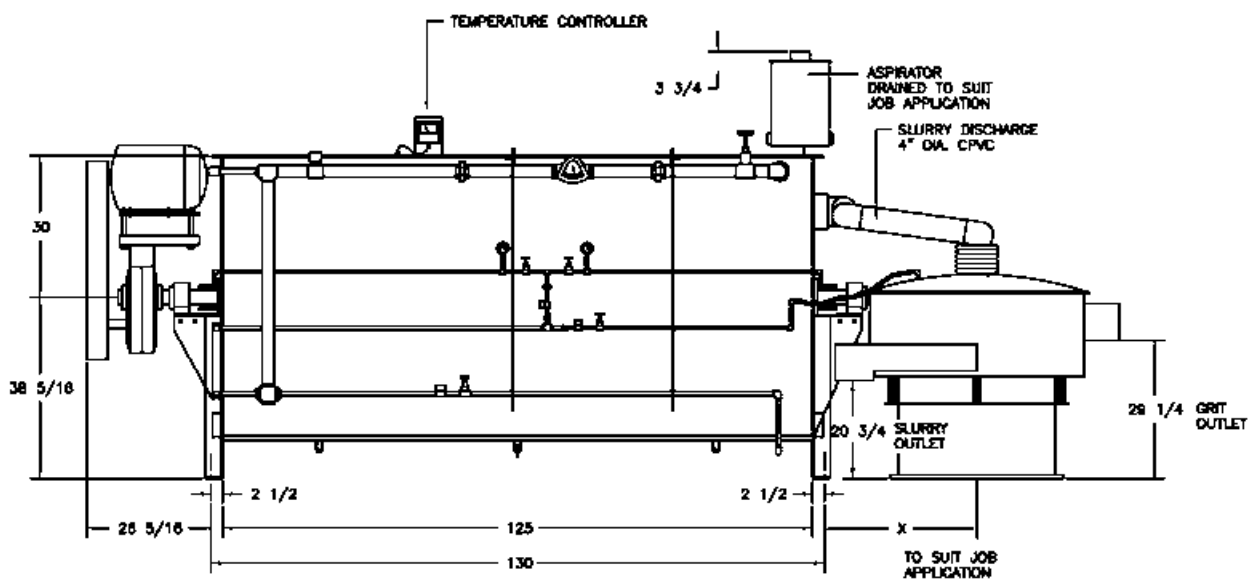
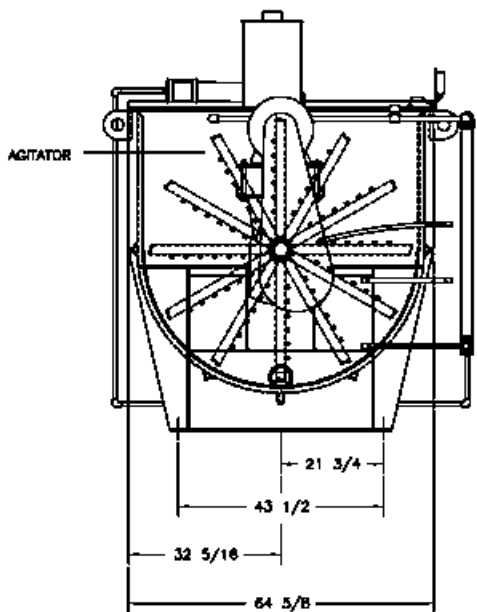
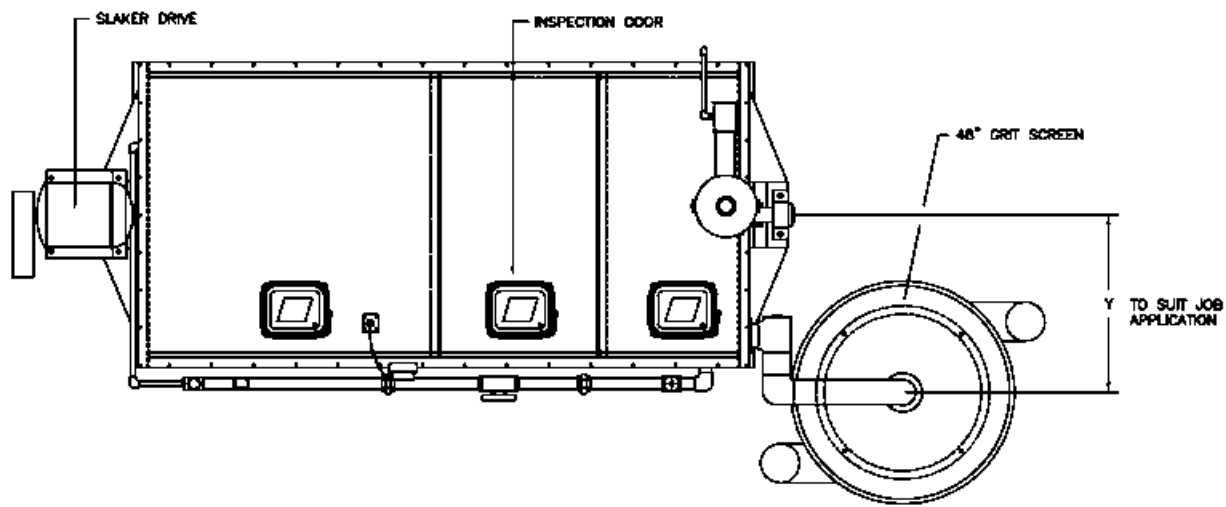
M-55 SLAKER (LEFT HAND DRIVE)  
 PORTEC DIMENSIONAL DRAWING



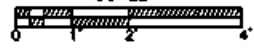
ALL DIMENSIONS ARE APPROXIMATE  
 AND SUBJECT TO CHANGE

**ZMI/PORTEC CHEMICAL PROCESSING PRODUCTS**  
 P.O. BOX 274, SIBLEY IOWA 51249

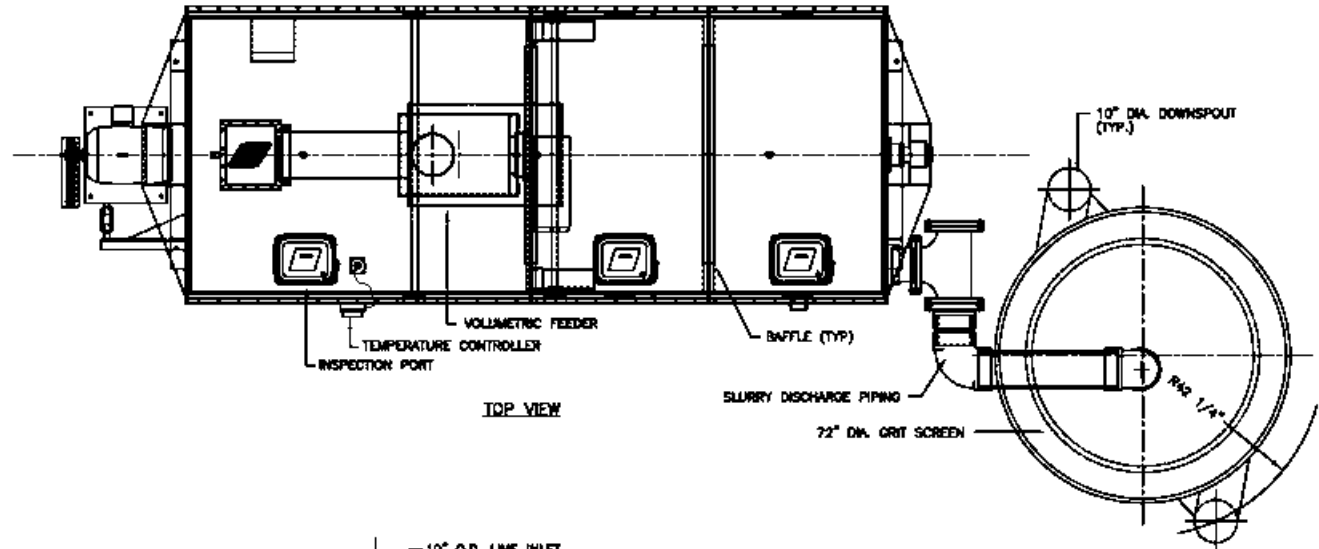
DRUM SHELL 3/16"  
 DRUM LINER 1/4"  
 WATER JACKET 10 GA.  
 END PLATES 5/16"  
 BREAKER BARS 3/4" x 3/4"  
 HARDENED STEEL  
 293/391 BRINELL  
 NET VOLUME 182 CU. FT.  
 1386 GALLONS  
 CaO/HR. 16,000 LBS.  
 WATER 126 GPM  
 INLET 2 1/2"  
 DRIVE 15 HP  
 NET SLAKER WEIGHT 6887 LBS.  
 NET SCREEN WEIGHT 659 LBS.  
 NET FEEDER WEIGHT 375 LBS.



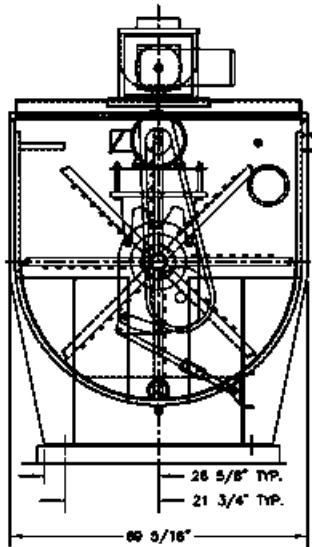
M-60 SLAKER (LEFT HAND DRIVE)  
 PORTEC DIMENSIONAL DRAWING

SCALE:   
 ALL DIMENSIONS ARE APPROXIMATE  
 AND SUBJECT TO CHANGE

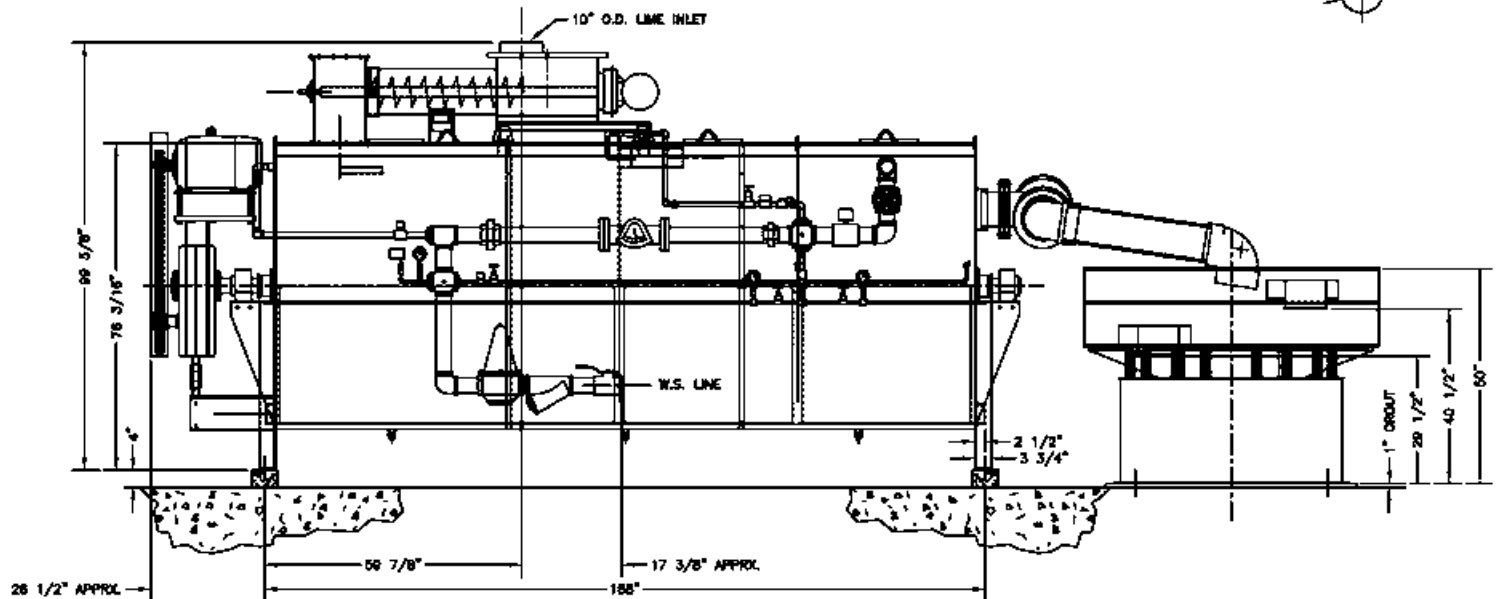
DRUM SHELL 3/16"  
 DRUM LINER 1/4"  
 WATER JACKET 10 GA.  
 END PLATES 5/16"  
 BREAKER BARS 3/4" x 3/4"  
 HARDENED STEEL  
 293/391 BRINELL  
 NET VOLUME 1966 GALLONS  
 CaO/HR. 26,000 LBS.  
 WATER 220 GPM  
 INLET 3"  
 DRIVE 20 HP  
 NET SLAKER WEIGHT 6547 LBS.  
 NET SCREEN WEIGHT 902 LBS.  
 NET FEEDER WEIGHT 375 LBS.



TOP VIEW

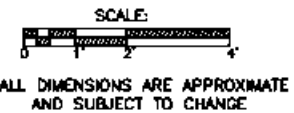


DRIVE END VIEW



SIDE VIEW

M-90 SLAKER (LEFT HAND DRIVE)  
 PORTEC DIMENSIONAL DRAWING



### ZMI/PORTEC M-120 LIME SLAKER

DRUM SHELL	5/16"
DRUM LINER	1/4"
WATER JACKET	5/16"
END PLATES	5/8"
BREAKER BARS	1" x 1"
HARDENED STEEL (293/391 BRINELL)	
NET VOLUME	634 FT <sup>3</sup>
	4741 GALLONS
CaO/HR	50,000 LBS
WATER	440 GPM (4" INLET)
DRIVE	40 HP
NET WEIGHT	29,000 LBS

